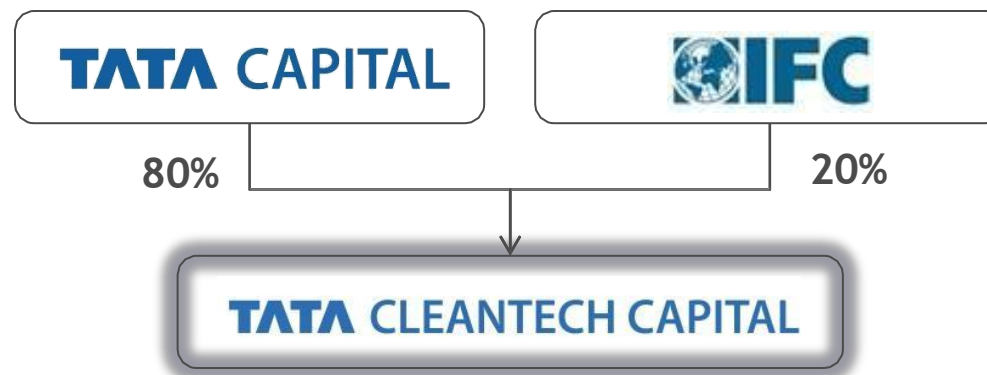


Water Management in Tata Companies - Natural Capital Risk Exposure of Financial Sector in India organized by GIZ - Nov'15

Tata Cleantech Capital Ltd (TCCL)

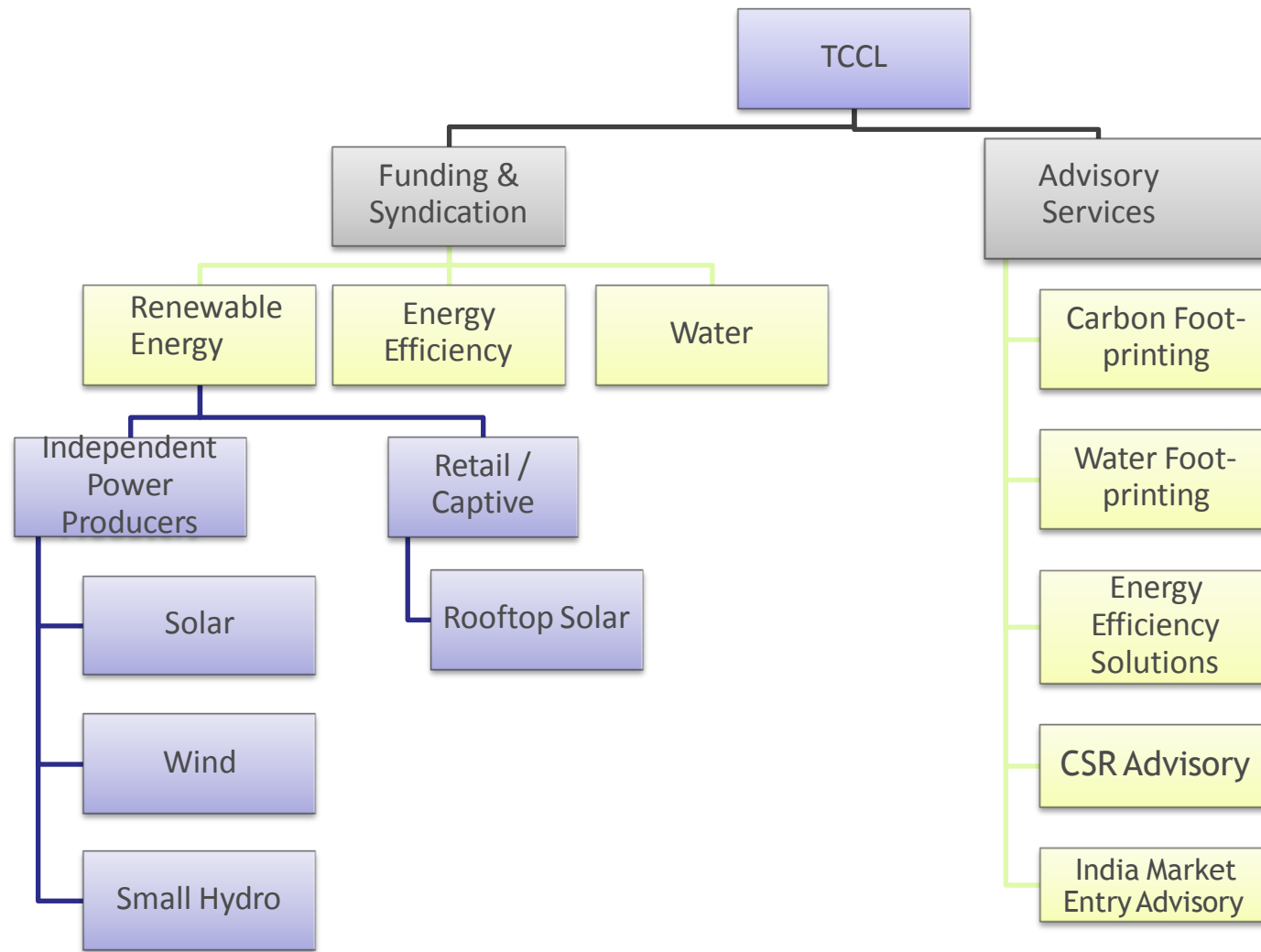


- Tata Cleantech Capital is a joint venture between Tata Capital and International Finance Corporation (IFC), a member of the World Bank Group

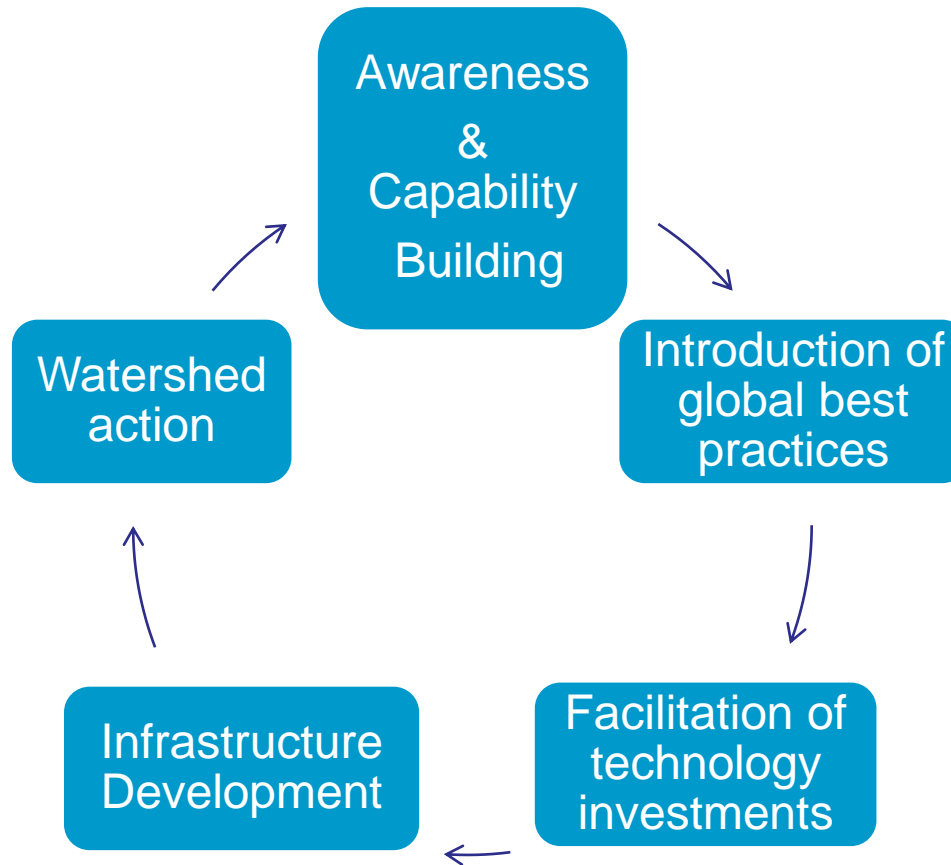


- The company is building capabilities to offer a array of financial solutions and advisory services that enhance natural resource efficiency and/or aid carbon footprint reduction.

Tata Cleantech Capital : Business Lines



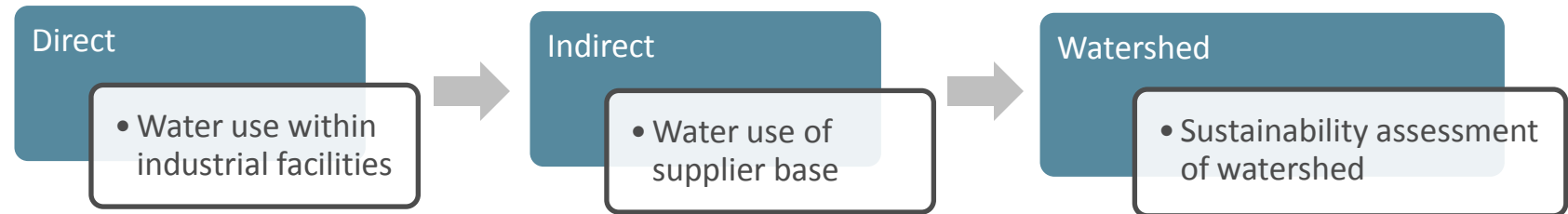
WATER - what is Tata doing?



...through creating Tata water champions and rolling out WFA in top 50 Tata companies with their help starting with 4 largest cos.

Water Foot Print Assessment

Coverage



Partner Organizations and Roles and Responsibilities



Tata

- Management of internal relations
- Acquisition of Water Footprint Assessment (WFA) expertise for internal dissemination
- Performance of water footprint assessments with support of Tata facility staff and WFN

International Finance Corporation

- Project scoping and design
- Strategic and Technical Support to project implementation
- Mobilization and supervision of WFN services
- Cost sharing

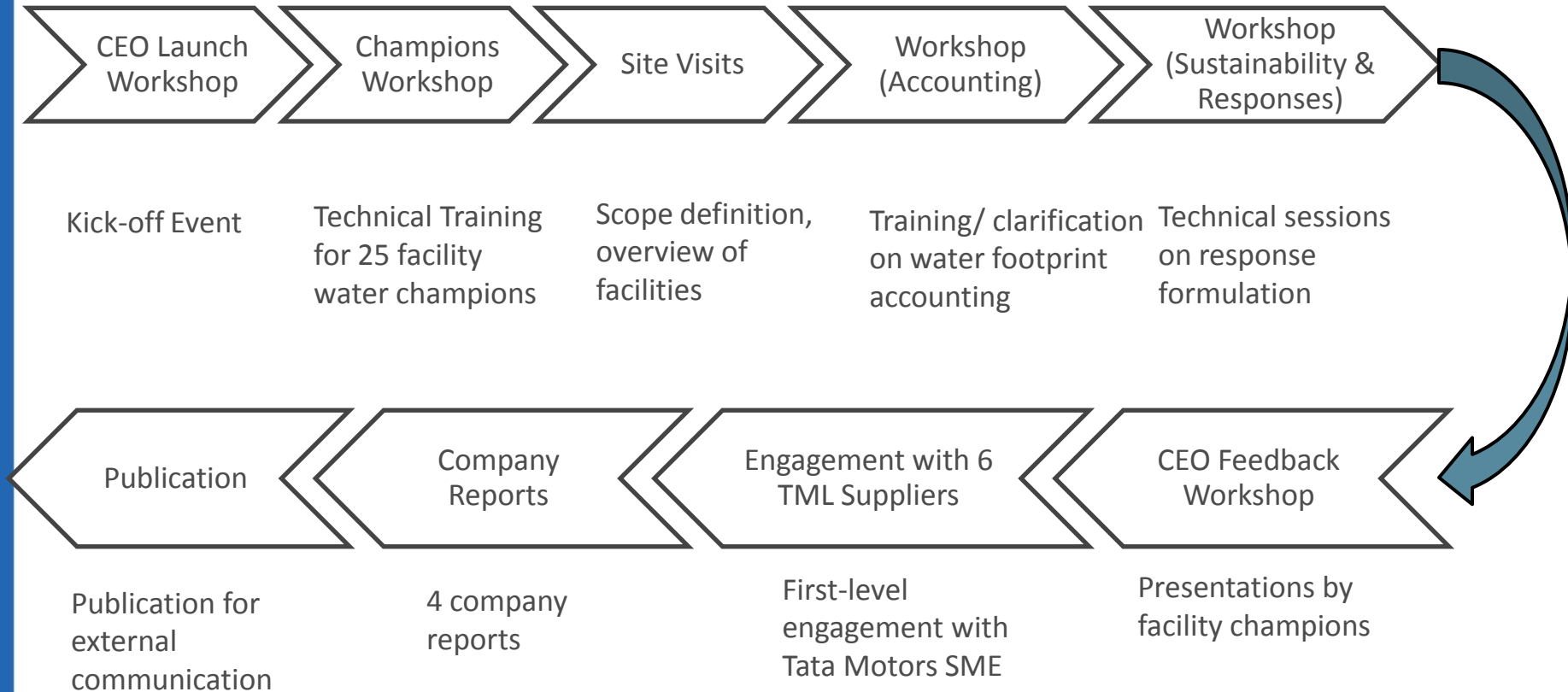
Water Footprint Network (WFN)

- Technical assistance on WFA
- Design and delivery of trainings
- Capacity building of TQMS and Tata facility staff
- Verification/ interpretation of results
- Preparation of global publication

Project Activities



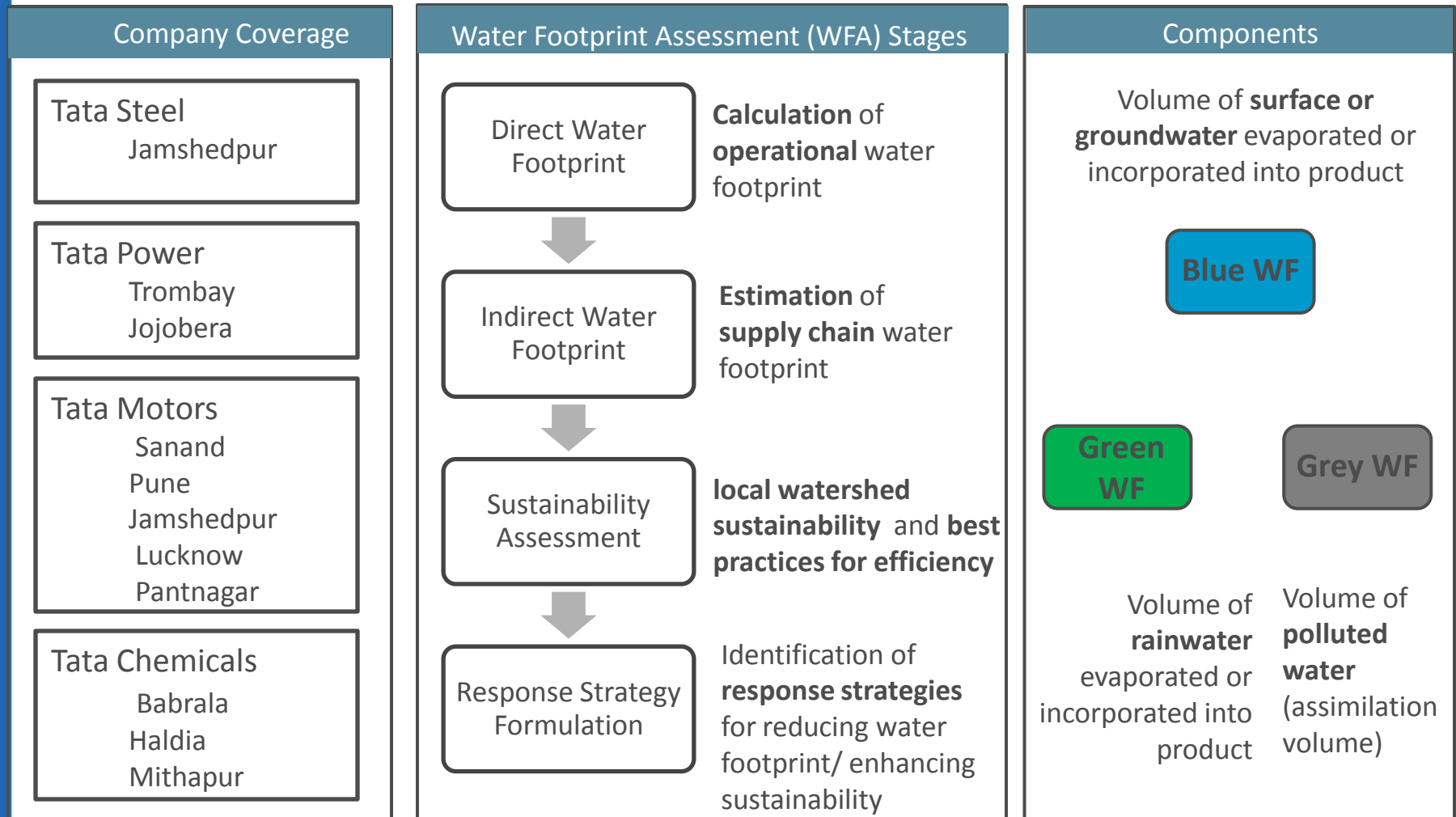
Process focuses on transferring skills to facility managers



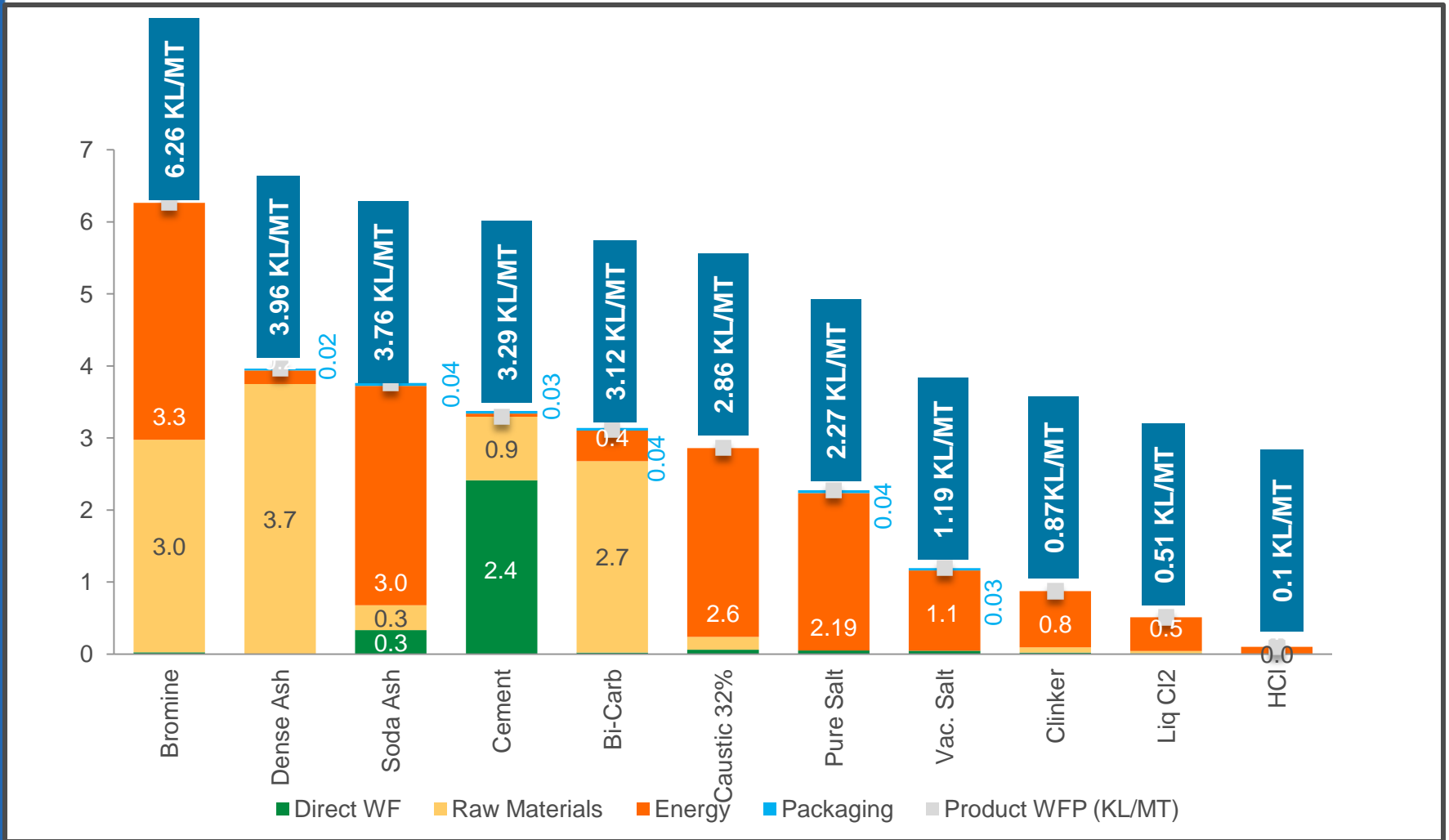
Scope of Water Footprint Project



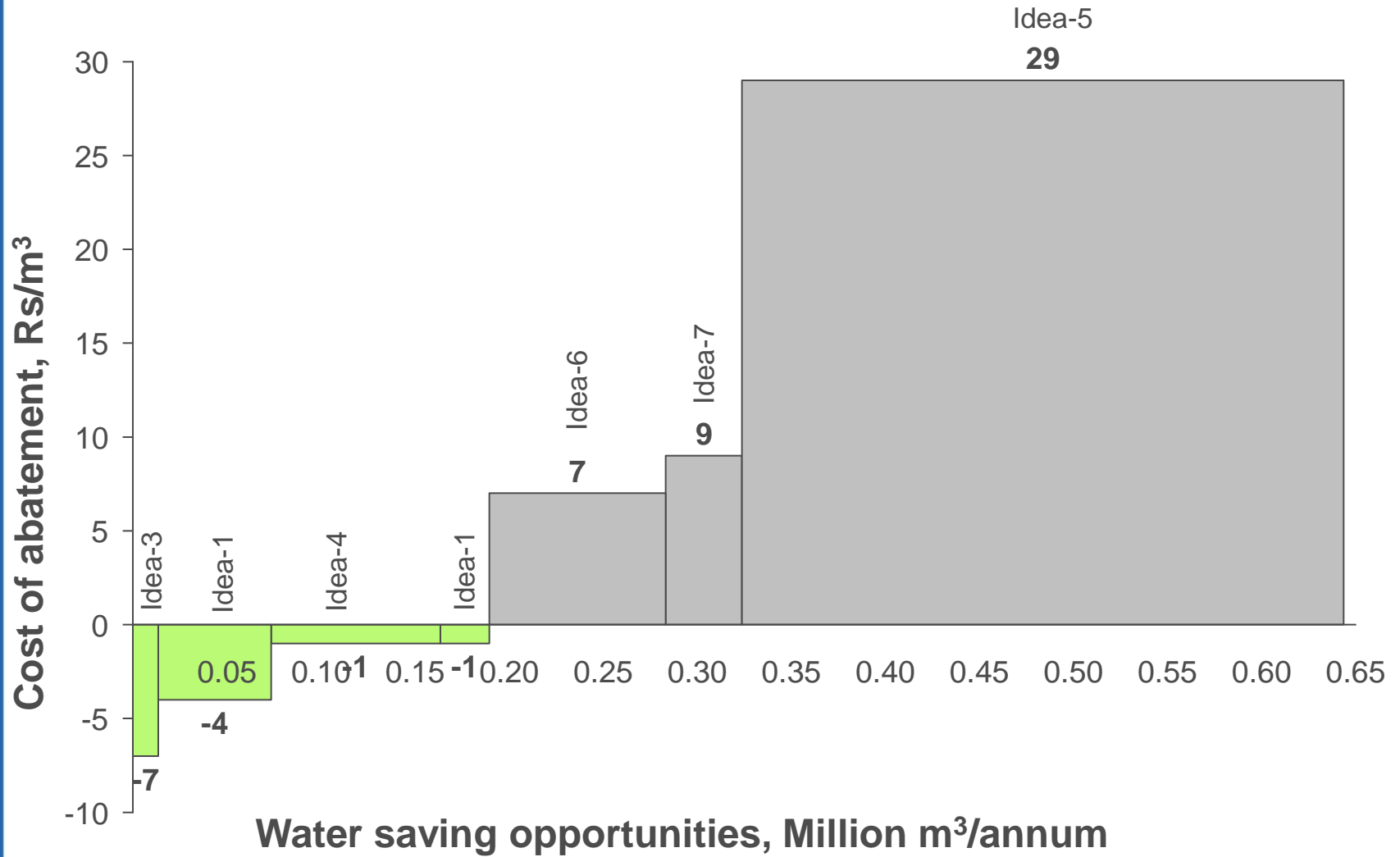
WF is a multi-dimensional indicator focused on **fresh water** consumption



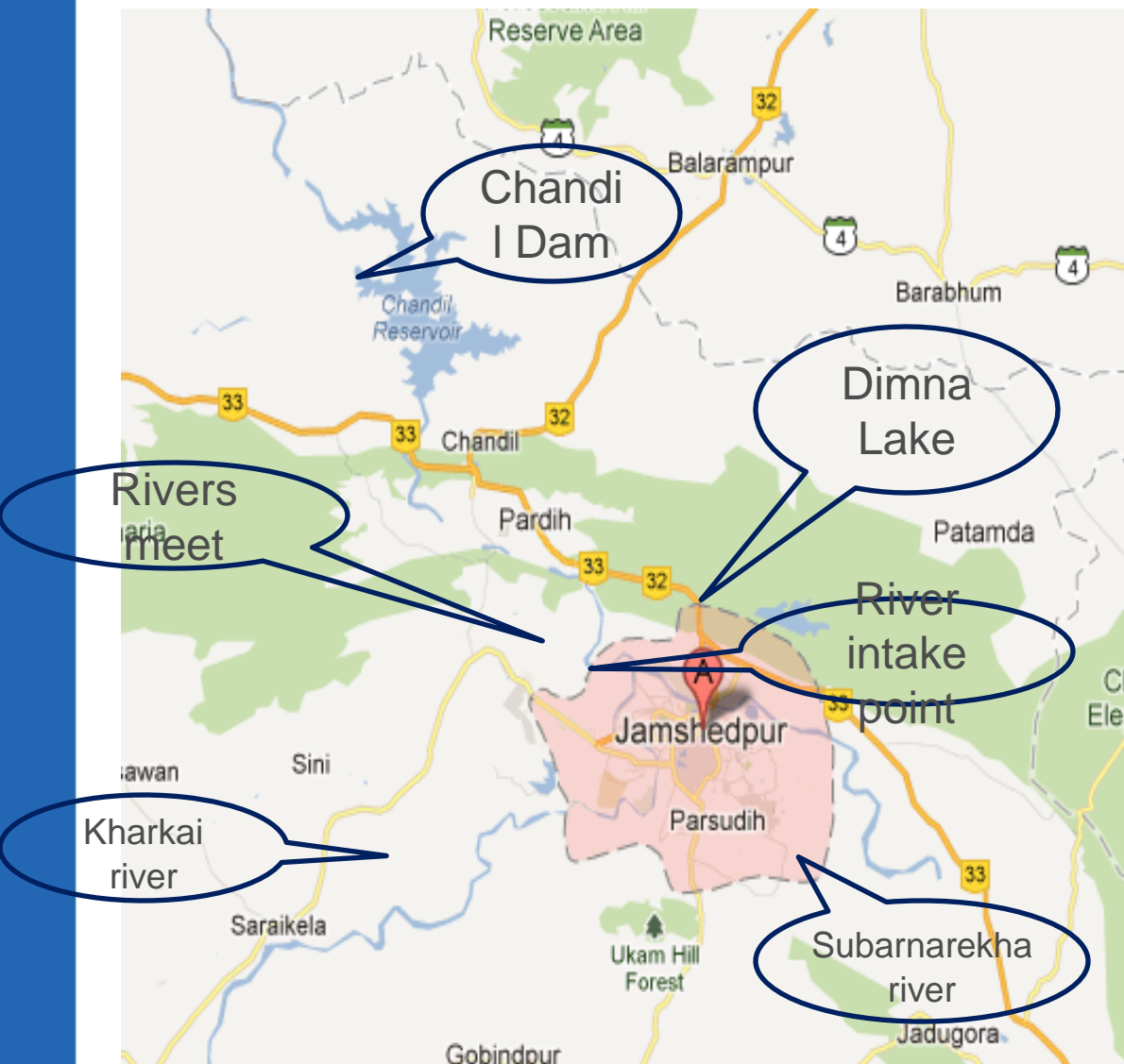
Product Blue WFP



Cost Curve



Local Water Shed for Jamshedpur



•Tata Steel Jamshedpur is located in between Subarnarekha and Kharkai River. Upstream of Subarnarekha river Chandil Dam (Capacity **1963 MCM**) is located which releases water continuously to maintain the flow of the river.

•The river intake is located at Subarnarekha river to caters the need of entire township as well as other associated companies including Tata Steel.

• Dimna Lake constructed by Tata Steel for Emergency water supply

- Capacity – **28.6 MCM**
- Can cater 40 days in emergency

Summary Results - Within Fence



Name of Company	Comparative water consumption (m ³ per unit)	Specific water consumption (m ³ per unit)	Abatement opportunity % of current consumption
Tata Power	1.8	3.0	15%
Tata Steel	3.0	5.84	33%
Tata Motors	1.7	4.7	50%
Tata Chemicals			
Soda Ash	2.5-3.6	0.15-0.5*	1.0%
Urea	4.0-4.5	4.85	10%
SPS	0.2-1	0.33	20%

* Considers only fresh water

Water Footprint Assessment: Highlights

Priority focus

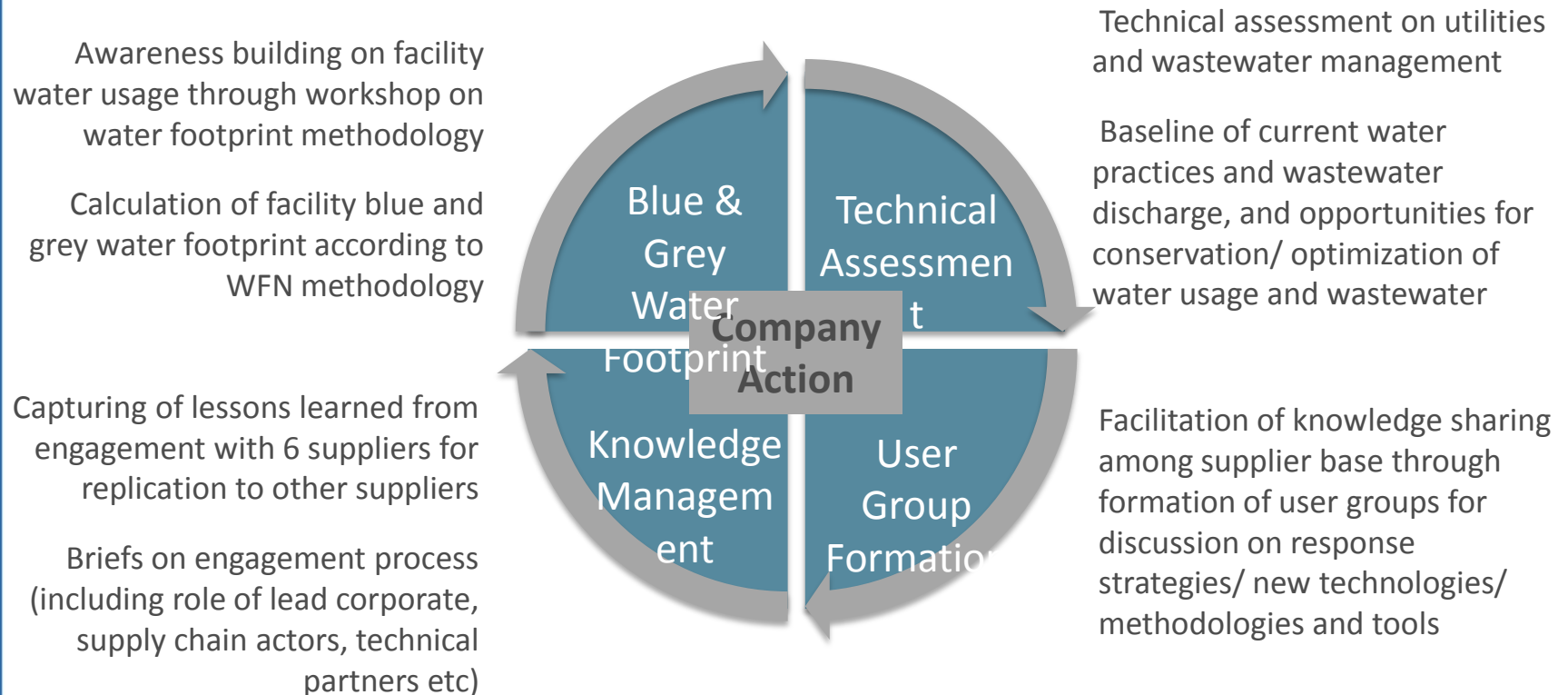
Secondary focus

Other focus

	Tata Steel	Tata Motors	Tata Chemicals	Tata Power
Operational water footprint	Dominant water user in watershed	Low direct blue water footprint	Water-use efficient	Footprint highly dependent on fuel
Supply chain water footprint	Simple supply chain	Indirect blue water footprint 85% of total	Raw material and energy significant contributors	Variation across facilities on share of supplier water footprint
Sustainability Assessment	Sustainability of water use at risk due to new agricultural water canal	Need for water use efficiency due to competing claims across all stakeholders	Participatory watershed management	Risk to water availability due to Mumbai water requirements
Response Strategy Formulation	Investments for zero water discharge by 2013	Low-hanging fruits implemented; need for technology investments	Investments for zero discharge & promotion of sustainable practices by farmers	Desalination plant

Tata Motors - Vendor Engagement

Overview



Comprehensive Environmental Sustainability



2008

- Carbon Footprint and Water Management in Tata Companies
- 350 Climate Change Champions
- Communication on Green Economy

Climate Change

Cambridge Sustainability Leadership Program

- Attended by 150+ CEOs/Sr Executives



2012



Sustainability

Thank You

arunavo.mukerjee@tatacapital.com